

COMMON LITERARY ELEMENTS



LITERARY ELEMENTS ARE THE FUNDAMENTAL BUILDING BLOCKS OF WRITING, AND THEY PLAY AN IMPORTANT ROLE IN HELPING US WRITE, READ, AND UNDERSTAND LITERATURE.

SETTING



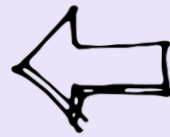
WHERE | WHEN

Refers to the time and place in which a story takes place.

Location Examples:
New York City
A Castle
Time Examples:
long ago
8 PM
1921



Examples:
war
love
revenge
betrayal
motherhood
forgiveness



THEME

MAIN IDEA | UNDERLYING MEANING

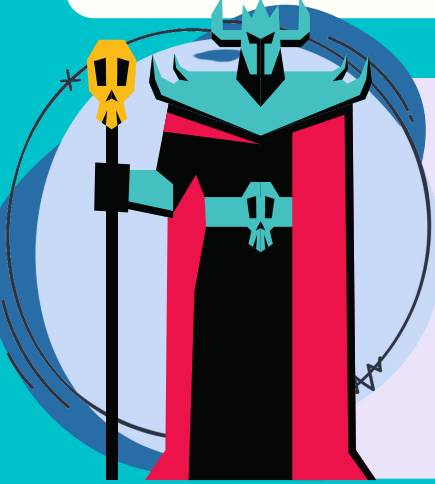
The central idea or concept of a story.

CHARACTER



PERSON, OBJECT OR ANIMAL

A piece of literature has to have at least one character, which can be a person, an object, or an animal.



Character vs Character
Character vs Nature
Character vs Self
Character vs Society
Character vs Supernatural
Character vs Technology

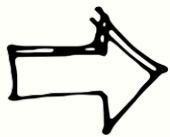


CONFLICT

OPPOSING FORCES

A struggle between opposing forces throughout the story.

PLOT



EVENTS THAT MAKE THE STORY

The logical sequence of events that develops a story.

Exposition
Rising Action
Climax
Falling Action
Resolution/Denouement



POINT OF VIEW

FIRST, SECOND OR THIRD PERSON

The position of the narrator in relation to the story through which the reader experiences the story. The angle or perspective from which a story is told.

MOOD



EMOTION OR FEELING

The emotion or feeling that readers get from reading the words on a page. This feeling is the result of both the tone and atmosphere of the story.

Example: CHEERFUL
Description of laughter, delicious smells, and bright colors can indicate a cheerful mood with feelings of joy and happiness.

