

FIGURATIVE LANGUAGE

METAPHOR vs SIMILE

Metaphors and similes are both figures of speech used to make a comparison. A metaphor directly compares one thing to another while a simile uses "like" or "as" to make the comparison.

Metaphors and similes make a comparison between two things that are **NOT** alike.

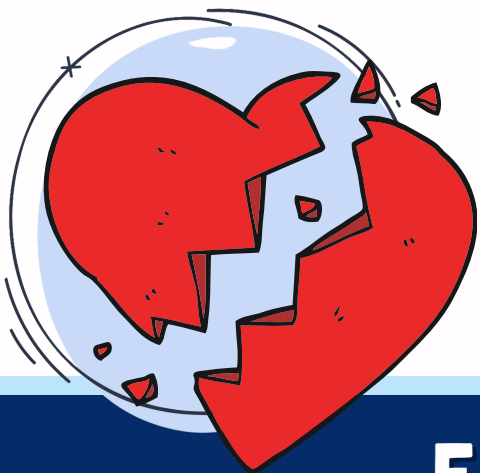
A metaphor creates an **implicit** comparison

A metaphor **DOES NOT** use "like" or "as".

A metaphor **IS** something else.

A **metaphor does not** use like or as.

She broke his heart.



A simile creates an **explicit** comparison

A simile **USES "like" or "as"**.

A simile is **LIKE** or **AS** something else.



A **simile** uses **like** or **as**.

Life is **like** a rollercoaster.

EXAMPLES

- ▷ His words cut me deep.
- ▷ Laughter is music for the soul.
- ▷ Time is money.
- ▷ I've always been the black sheep in my family.
- ▷ He is a night owl because he stays up so late.
- ▷ You are my sunshine.
- ▷ Her dream died when she lost her job.

- ▷ He's like a bear when he's hungry.
- ▷ She sang like an angel.
- ▷ Tom is as brave as a lion.
- ▷ That little girl is sweet as sugar.
- ▷ His eyes shone bright like diamonds.
- ▷ Your hands were as cold as ice.
- ▷ The grapes are like candy.